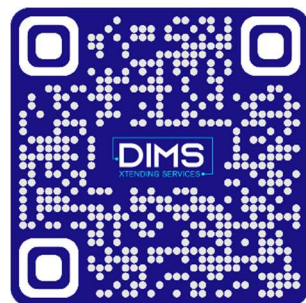


Product Catalogue

WEB Configuration Product Series



4G All-Netcom
communication, field data
collection, MQTT cloud,
remote data monitoring
Open data Interfaces are
integrated by third-party
systems

IOT

IoT Edge Gateway	3
1	DG1001-ARM-4G3
2	DG1002-ARM-4G6
3	DG2004-ARM-4G9
4	DG2004-A9-4G12
5	W7-1041-4G15

Module	Supported Points	Supported Protocols	Interface
DG1001-ARM-4G	256	200	1 Ethernet1 port
DG1002-ARM-4G	512	200	1 Ethernet2 port
DG2004-ARM-4G	1024	200	2 Ethernet4 port
DG2004-A9-4G	2048	200	2 Ethernet4 port
W7-1041-4G	2048	200	1 Ethernet, 4 RS485, 1 RS232

WEB Configuration Gateway Production Module: DG1001-ARM-4G

Functional Description: WEB Configuration Gateway DG1001-ARM-4G with configuration editing software X2View can realize data collection and directly converted to configuration screen for real-time data monitoring. 4G network is adopted to facilitate the conversion of serial data to WeChat and SMS, so as to meet the needs of customers for remote data transmission. Users do not need to buy configuration software. They can log in to the configuration screen for monitoring by a computer, mobile phone, iPad or a device with browser capabilities. It is a good operating experience for users to realize the implementation of remote monitoring equipment start and stop, operation and other operations. At the same time, it supports WeChat alarm, Dingtalk alarm, Mail alarm, MQTT service, project upload Cloud sever and other functions ;It can also be forwarded to BACnet server, Modbus server and OPC UA server, and the open data interface can be integrated by the third-party system.

Application Fields : It is used in building automatic control system or industrial field to connect some common control equipment, such as PLC, DDC, UPS, central air conditioner, elevator, fire control system, light control system, electricity meter, water meter, etc. This allows users to monitor on-site devices on their phones, ipads and PCS.

Operating Environment:

OS: Windows XP/2000/2003/Win 7/Win8/Win10/Win Server 2003/Win Server2008/Win Vista etc.

Browser: IE9(and above), Apple's Safari, Google Chrome, 360 and Firefox, Opera etc.

Support register type and number

Note: Register points are dynamically supported and the total number of points cannot exceed 256.

The BACnet/Modbus register types and maximum number of points supported are shown in the table below.

BACnet Register Module	BACnet Register Number	Modbus Register Module	Modbus Register Number
AI (Read only)	256 (0~255)	0X(Coil Status)Read and Write	256 (1~256)
AO (Read and Write)	256 (0~255)	1X(Input Status)Read only	256 (1~256)
AV (Read and Write)	256 (0~255)	4X(Holding Register)Read and Write	256 (1~512)
BI (Read only)	256 (0~255)	3X(Input Register)Read only	256 (1~512)
BO (Read and Write)	256 (0~255)		
BV (Read and Write)	256 (0~255)		
MI (Read only)	256 (0~255)		
MO (Read and Write)	256 (0~255)		
MV (Read and Write)	256 (0~255)		

Note:
 4X and 3X register addresses = the register addresses of BACnet *2+1
 Register address of 0X and 1X = register address of BACnet +1

WEB Configuration Gateway Production Module:DG1001-ARM-4G



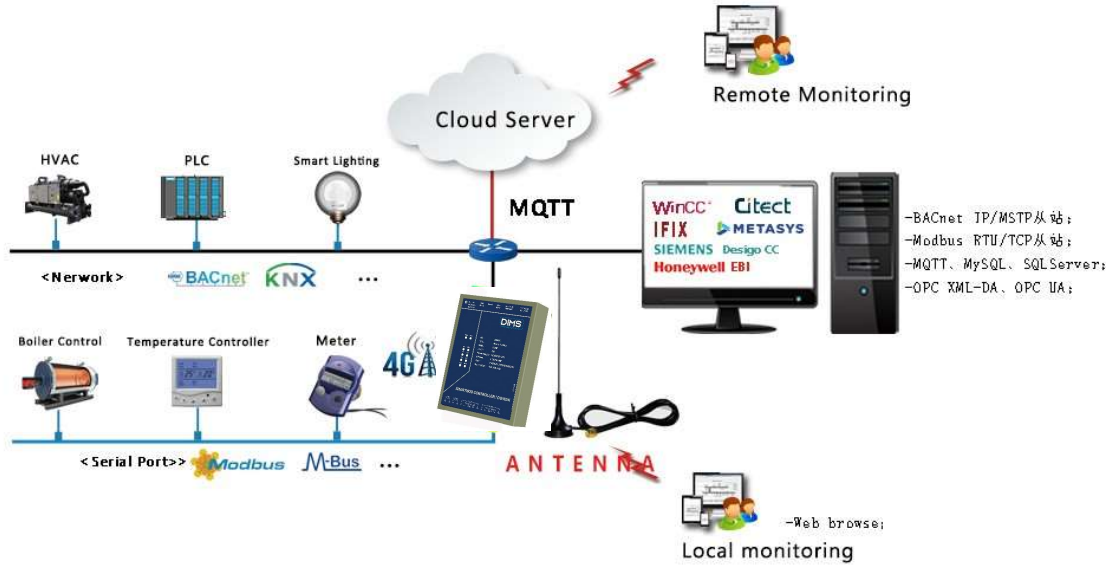
Software Features:

- Green installation free, support Chinese and English;
- Support simultaneous conversion to BACnet server, Modbus server, OPC UA server, MQTT upload cloud server, external database storage, etc.;
- Support to send the alarm message by wechat , Dingtalk, SMS,Email. telephone and other communication method.
- Support JS script and PLC editing to realize logical control;
- Support 4G all-netcom;
- Support user group management, configuration screen monitoring can set permissions;
- LAN support, remote viewing and control of touch screen can be easily achieved through mobile phone, iPad and PC
- Add new private protocol support, which can be completed within 2 weeks;

Hardware Parameter:

CPU: 1 core 300MHz	Power Supply: AC/DC 12~24V
Memory: 64M 、 Flash: 128M	Size:(L×W×H): 99×74×27mm
System:Linux	Weight: 300g (Not including antenna)
1 SIM card socket, 4G standard support full network	Material: galvanized carbon steel
Interface:1 RS485/RS232 (alternatvie)	Installation: guide rail type
Power: 6W	Temperature: -20~70℃(working) -40~85℃ (storage and transportation)
Network: 1 100M/10M Ethernet Interface, AUTO MDI/MDIX support	Humidity: 20% ~ 90%, no condensation (work), 15% ~ 95%, no condensation (storage and transportation)

Application Principle Diagram



WEB Configuration Gateway Production Module:DG1002-ARM-4G

Functional Description: WEB Configuration Gateway DG1002-ARM-4G with configuration editing software X2View can realize data collection and directly converted to configuration screen for real-time data monitoring. 4G network is adopted to facilitate the conversion of serial data to WeChat and SMS, so as to meet the needs of customers for remote data transmission. Users do not need to buy configuration software. They can log in to the configuration screen for monitoring by a computer, mobile phone, iPad or a device with browser capabilities. It is a good operating experience for users to realize the implementation of remote monitoring equipment start and stop, operation and other operations. At the same time, it supports WeChat alarm, Dingtalk alarm, Mail alarm, MQTT service, project upload Cloud sever and other functions ;It can also be forwarded to BACnet server, Modbus server and OPC UA server, and the open data interface can be integrated by the third-party system.

Application Fields : It is used in building automatic control system or industrial field to connect some common control equipment, such as PLC, DDC, UPS, central air conditioner, elevator, fire control system, light control system, electricity meter, water meter, etc. This allows users to monitor on-site devices on their phones, ipads and PCS.

Operating Environment:

OS: Windows XP/2000/2003/Win 7/Win8/Win10/Win Server 2003/Win Server2008/Win Vista etc.

Browser: IE9(and above), Apple's Safari, Google Chrome, 360 and Firefox, Opera etc.

Support register type and number

Note: Register points are dynamically supported and the total points cannot exceed 512 points.

The BACnet/Modbus register types and maximum number of points supported are shown in the table below.

BACnet Register Module	BACnet Register Number	Modbus Register Module	Modbus Register Number
AI (Read only no writing)	512 (0~511)	0X(Coil Status)Read and Write	512 (1~512)
AO (Read and Write)	512 (0~511)	1X(Input Status)Read only	512 (1~512)
AV (Read and Write)	512 (0~511)	4X(Holding Register)Read and Write	512 (1~1024)
BI (Read only no writing)	512 (0~511)	3X(Input Register)Read only	512 (1~1024)
BO (Read and Write)	512 (0~511)		
BV (Read and Write)	512 (0~511)		
MI (Read only no writing)	512 (0~511)		
MO (Read and Write)	512 (0~511)		
MV (Read and Write)	512 (0~511)		

Note:
 4X and 3X register addresses = the register addresses of BACnet *2+1
 Register address of 0X and 1X = register address of BACnet +1

WEB Configuration Gateway Production Module:DG1002-ARM-4G



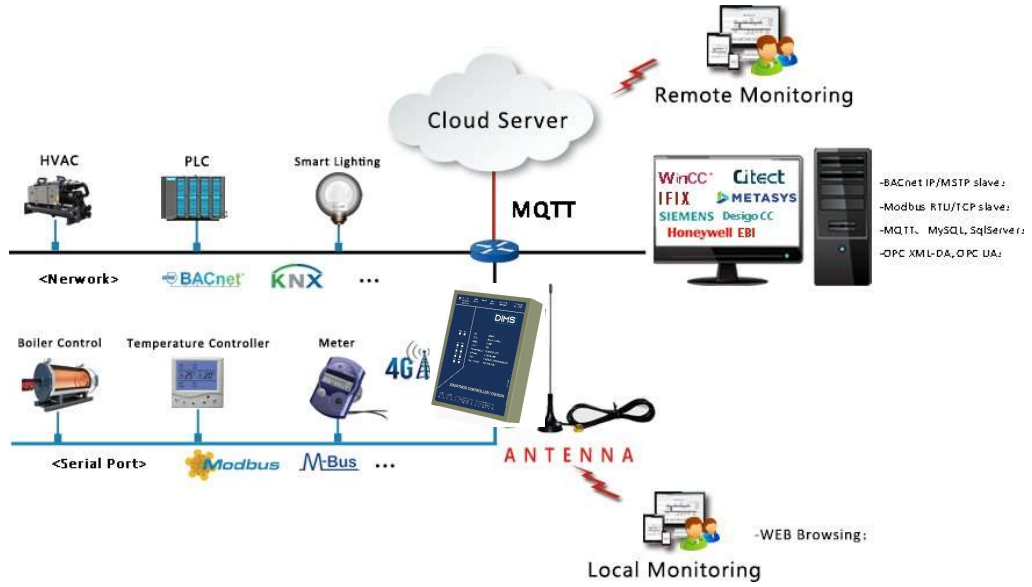
Software Features:

- Green installation free, support Chinese and English;
- Support simultaneous conversion to BACnet server, Modbus server, OPC UA server, MQTT upload cloud server, external database storage;
- Support to send the alarm message by wechat , Dingtalk, SMS,Email. telephone and other communication method.
- Support JS script and PLC editing to realize logical control;
- Support 4G all-netcom;
- Support user group management, configuration screen monitoring can set permissions;
- LAN support, remote viewing and control of touch screen can be easily achieved through mobile phone, iPad and PC
- Add new private protocol support, which can be completed within 2 weeks;

Hardware Parameter:

CPU: 1 core 300MHz	Power Supply: AC/DC 12~24V
Memory: 64M 、 Flash: 128M	Size:(L×W×H): 136×89×34mm
System:Linux	Weight: 400g (Not including antenna)
1 SIM card socket, 4G standard support full network	Material: galvanized carbon steel
Interface: 2 RS485/RS232(alternatvie)	Installation: guide rail type
Power: 6W	Temperature: -20~70℃(working) -40~85℃ (storage and transportation)
Network: 1 100M/10M Ethernet Interface, AUTO MDI/MDIX support	Humidity: 20% ~ 90%, no condensation (work), 15% ~ 95%, no condensation (storage and transportation)

Application Principle Diagram



WEB Configuration Gateway Production Module:DG2004-ARM-4G

Functional Description: **WEB Configuration Gateway** DG2004-A9-4G with configuration editing software X2View can realize data collection and directly converted to configuration screen for real-time data monitoring. 4G network is adopted to facilitate the conversion of serial data to WeChat and SMS, so as to meet the needs of customers for remote data transmission. Users do not need to buy configuration software.They can log in to the configuration screen for monitoring by a computer, mobile phone, iPad or a device with browser capabilities. It is a good operating experience for users to realize the implementation of remote monitoring equipment start and stop, operation and other operations.At the same time, it supports WeChat alarm,Dingtalk alarm, Mail alarm, MQTT service, project upload Cloud sever and other functions ;It can also be forwarded to BACnet server, Modbus server and OPC UA server, and the open data interface can be integrated by the third-party system.

Application Fields : It is used in building automatic control system or industrial field to connect some common control equipment, such as PLC, DDC, UPS, central air conditioner, elevator, fire control system, light control system, electricity meter, water meter, etc.This allows users to monitor on-site devices on their phones, ipads and PCS.

Operating Environment:

OS: Windows XP/2000/2003/Win 7/Win8/Win10/Win Server 2003/Win Server2008/Win Vista etc.

Browser: IE9(and above), Apple's Safari, Google Chrome, 360 and Firefox, Opera etc.

Support register type and number

Note: Register points are dynamically supported. Total points cannot exceed 1024.

The BACnet/Modbus register types and maximum number of points supported are shown in the table below.

BACnet Register Module	BACnet Register Number	Modbus Register Module	Modbus Register Number
AI (Read only no writing)	1024 (0~1023)	0X(Coil Status)Read and Write	1024 (1~1024)
AO (Read and Write)	1024 (0~1023)	1X(Input Status)Read only	1024 (1~1024)
AV (Read and Write)	1024 (0~1023)	4X(Holding Register)Read and Write	1024 (1~2048)
BI (Read only no writing)	1024 (0~1023)	3X(Input Register)Read only	1024 (1~2048)
BO (Read and Write)	1024 (0~1023)		
BV (Read and Write)	1024 (0~1023)		
MI (Read only no writing)	1024 (0~1023)		
MO (Read and Write)	1024 (0~1023)		
MV (Read and Write)	1024 (0~1023)		

Note:
 4X and 3X register addresses = the register addresses of BACnet *2+1
 Register address of 0X and 1X = register address of BACnet +1

WEB Configuration Gateway Production Module:DG2004-ARM-4G



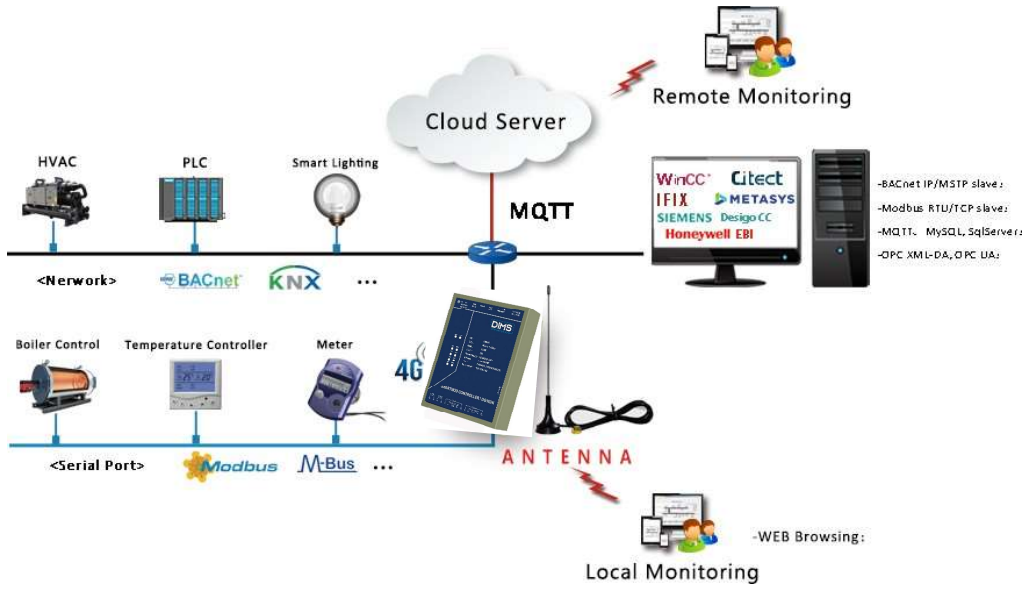
Software Features:

- Green installation free, support Chinese and English;
- Support simultaneous conversion to BACnet server, Modbus server, OPC UA server, MQTT upload cloud server, external database storage, etc.;
- Support to send the alarm message by wechat , Dingtalk, SMS,Email. telephone and other communication method.
- Support JS script and PLC editing to realize logical control;
- Support 4G all-netcom;
- Support user group management, configuration screen monitoring can set permissions;
- LAN support, remote viewing and control of touch screen can be easily achieved through mobile phone, iPad and PC
- Add new private protocol support, which can be completed within 2 weeks;

Hardware Parameter:

CPU: 4 Core 1.4GHz	Power Supply: AC/DC 12~24V
Memory: 512M high performance Memory, Flash: 8G	Size:(L×W×H): 147×94×35mm
System:Linux	Weight: 300g (Not including antenna)
Power: 8W	Material: galvanized carbon steel
Interface: 2 Ethernet, 3个RS485Interface, 1个RS485/RS232(alternative)	Installation: guide rail type
1 SIM card socket, 4G standard support full network	Temperature: -20~70℃(working) -40~85℃ (storage and transportation)
Network: 1x High-performance 100M/10M adaptive Industrial Network Card, support AUTO MDI/MDIX	Humidity: 20% ~ 90%, no condensation (work), 15% ~ 95%, no condensation (storage and transportation)

Application Principle Diagram



WEB Configuration Gateway Production Module:DG2004-A9-4G

Functional Description: **WEB Configuration Gateway** DG2004-A9-4G with configuration editing software X2View can realize data collection and directly converted to configuration screen for real-time data monitoring. 4G network is adopted to facilitate the conversion of serial data to WeChat and SMS, so as to meet the needs of customers for remote data transmission. Users do not need to buy configuration software. They can log in to the configuration screen for monitoring by a computer, mobile phone, iPad or a device with browser capabilities. It is a good operating experience for users to realize the implementation of remote monitoring equipment start and stop, operation and other operations. At the same time, it supports WeChat alarm, Dingtalk alarm, Mail alarm, MQTT service, project upload Cloud sever and other functions ;it can also be forwarded to BACnet server, Modbus server and OPC UA server, and the open data interface can be integrated by the third-party system.

Application Fields : It is used in building automatic control system or industrial field to connect some common control equipment, such as PLC, DDC, UPS, central air conditioner, elevator, fire control system, light control system, electricity meter, water meter, etc. This allows users to monitor on-site devices on their phones, ipads and PCS.

Operating Environment:

OS: Windows XP/2000/2003/Win 7/Win8/Win10/Win Server 2003/Win Server2008/Win Vista etc.

Browser: IE9(and above), Apple's Safari, Google Chrome, 360 and Firefox, Opera etc.

Support register type and number

Note: Register points are dynamically supported. Total points cannot exceed 2048.

The BACnet/Modbus register types and maximum number of points supported are shown in the table below.

BACnet Register Module	BACnet Register Number	Modbus Register Module	Modbus Register Number
AI (Read only no writing)	2048 (0~2047)	0X(Coil Status)Read and Write	2048 (1~2048)
AO (Read and Write)	2048 (0~2047)	1X(Input Status)Read only	2048 (1~2048)
AV (Read and Write)	2048 (0~2047)	4X(Holding Register)Read and Write	2048 (1~4096)
BI (Read only no writing)	2048 (0~2047)	3X(Input Register)Read only	2048 (1~4096)
BO (Read and Write)	2048 (0~2047)	Note: 1.4X and 3X register addresses = the register addresses of BACnet *2+1 Register address of 0X and 1X = register address of BACnet +1 2. Rolling out 4X and 3X can only have Float data types	
BV (Read and Write)	2048 (0~2047)		
MI (Read only no writing)	2048 (0~2047)		
MO (Read and Write)	2048 (0~2047)		
MV (Read and Write)	2048 (0~2047)		

WEB Configuration Gateway Production Module:DG2004-A9-4G



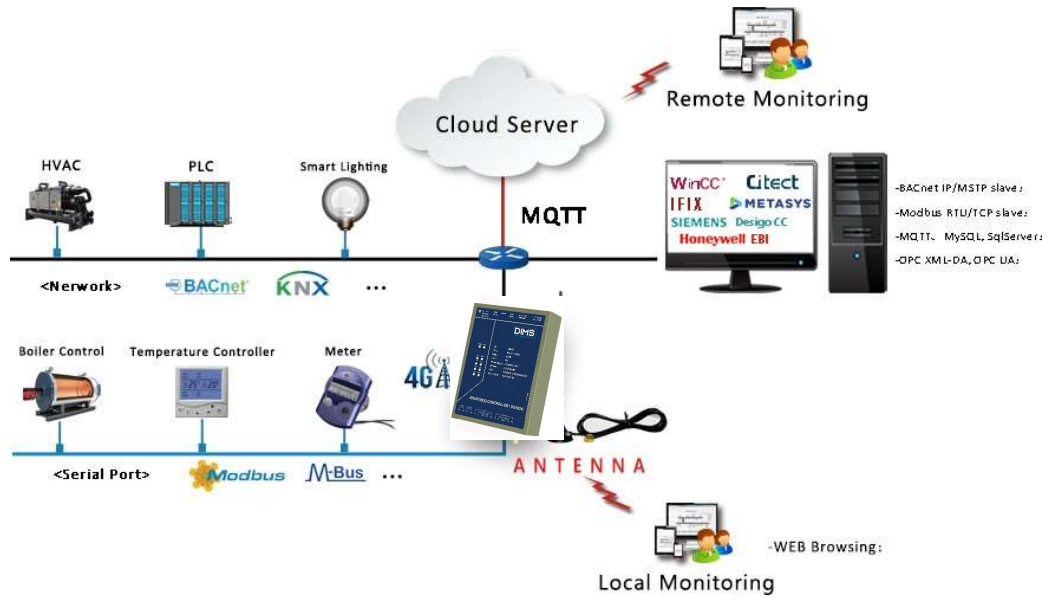
Software Features:

- Green installation free, support Chinese and English;
- Support simultaneous conversion to BACnet server, Modbus server, OPC UA server, MQTT upload cloud server, external database storage;
- Support to send the alarm message by wechat , Dingtalk, SMS,Email. telephone and other communication method.
- Support JS script and PLC editing to realize logical control;
- Support 4G all-netcom;
- Support user group management, configuration screen monitoring can set permissions;
- LAN support, remote viewing and control of touch screen can be easily achieved through mobile phone, iPad and PC
- Add new private protocol support, which can be completed within 2 weeks;

Hardware Parameter:

CPU: 4 Core 1.4GHz	Power Supply: AC/DC 12~24V
Memory: 512M high performance Memory, Flash: 8G	Size:(L×W×H): 147×94×35mm
System:Linux	Weight: 300g (Not including antenna)
Power: 8W	Material: galvanized carbon steel
Interface: 2 Ethernet, 3个RS485Interface, 1个RS485/RS232(alternative)	Installation: guide rail type
1 SIM card socket, 4G standard support full network	Temperature: -20~70°C(working) -40~85°C (storage and transportation)
Network: 2x High-performance 100M/10M adaptive Industrial Network Card, support AUTO MDI/MDIX	Humidity: 20% ~ 90%, no condensation (work), 15% ~ 95%, no condensation (storage and transportation)

Application Principle Diagram



7 WEB Configuration Touch panel Production Module:W7-1041-4G (Insert SIM card)

Functional Description: W7-1041 touch screen is a new DG interface , which can support PC, mobile phone, iPad and other access. With configuration editing software X2View, real-time data collection can be realized, and the configuration screen can be edited to finally display on the touch screen, so as to realize real-time data monitoring. At the same time, it supports WeChat alarm, Dingtalk alarm, email alarm, SMS alarm, phone alarm (optional), email alarm MQTT service, project upload cloud and other functions; It can also be forwarded as a BACnet server, Modbus server or OPC UA server, and the Open Data Interface is integrated by third-party systems.

Application Fields : It is used in building automatic control system or industrial field to connect some common control equipment, such as PLC, DDC, UPS, central air conditioner, elevator, fire control system, light control system, electricity meter, water meter, etc. This allows users to monitor on-site devices via a WEB configured touch screen, or mobile phone, PAD, or PC.

Operating Environment:

OS: Windows XP/2000/2003/Win 7/Win8/Win10/Win Server 2003/Win Server2008/Win Vista etc.

Browser: IE9(and above), Apple's Safari, Google Chrome, 360 and Firefox, Opera etc.

Support register type and number

Note: Register points are dynamically supported. Total points cannot exceed 2048.

The BACnet/Modbus register types and maximum number of points supported are shown in the table below.

BACnet Register Module	BACnet Register Number	Modbus Register Module	Modbus Register Number
AI (Read only no writing)	2048 (0~2047)	0X(Coil Status)Read and Write	2048 (1~2048)
AO (Read and Write)	2048 (0~2047)	1X(Input Status)Read only	2048 (1~2048)
AV (Read and Write)	2048 (0~2047)	4X(Holding Register)Read and Write	2048 (1~4096)
BI (Read only no writing)	2048 (0~2047)	3X(Input Register)Read only	2048 (1~4096)
BO (Read and Write)	2048 (0~2047)		
BV (Read and Write)	2048 (0~2047)		
MI (Read only no writing)	2048 (0~2047)		
MO (Read and Write)	2048 (0~2047)		
MV (Read and Write)	2048 (0~2047)		

Note:
 4X and 3X register addresses = the register addresses of BACnet *2+1
 Register address of 0X and 1X = register address of BACnet +1

7inch WEB Configuration touch panel Production Module: W7-1041-4G



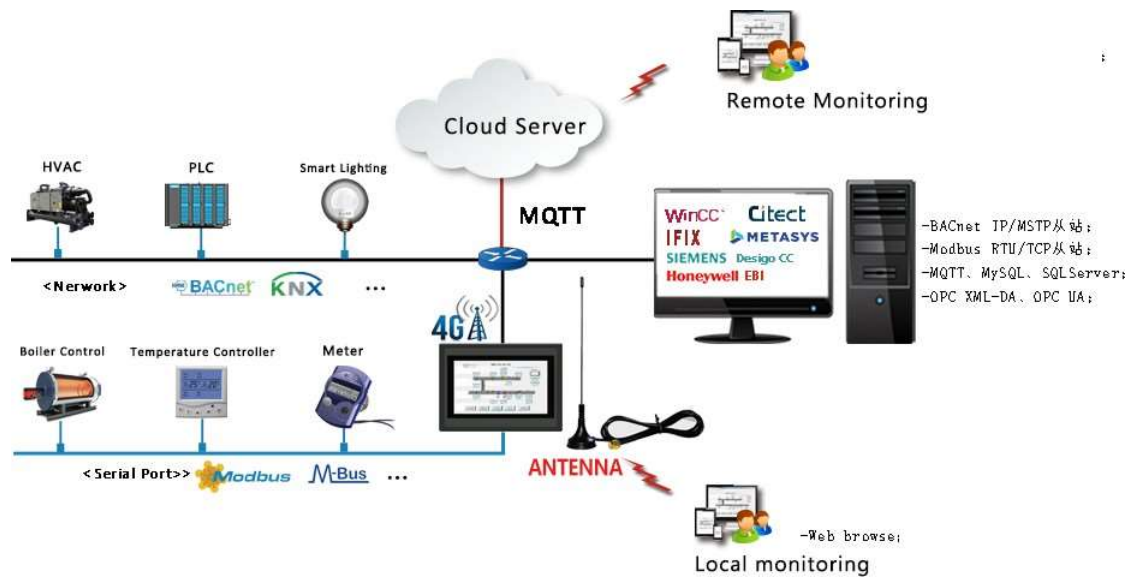
Software Features:

- Green installation free, support Chinese and English;
- W7-1041 supports simultaneous conversion to BACnet server, Modbus server or OPC UA server, and MQTT upload to the cloud;
- Support to send the alarm message by wechat , Dingtalk, SMS,Email. telephone and other communication method.
- Support JS script and PLC editing to realize logical control;
- Support user group management, configuration screen monitoring can set permissions;
- Support historical storage, custom cycle, maximum storage 31 days;
- Supports various forms of timing and event triggering, and provides custom functions for the convenience of extending the application;
- Support LAN, easily realize remote view and control of touch screen through mobile phone, PAD and PC
- Add new private protocol support, which can be completed within 2 weeks;

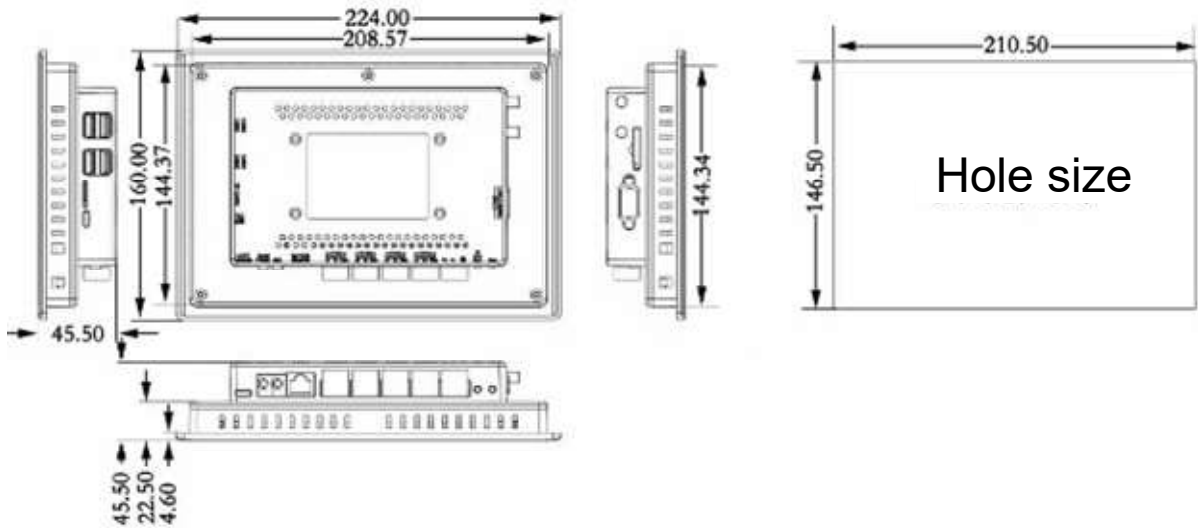
Hardware Parameter:

Screen resolution : 1024*600pixel	Display : 7" TFT
Memory: DDR3 1G	Type of touch: resistance
System:Linux	Weight: 0.55kg
Power: ≤7W	Material: Plastic Enclosure
CPU: 4 Core 1.4GHZ	Power Supply: AC/DC 12~24V
Interface: 1 Ethernet, 4 RS485, 1 RS232, 1 Debug serial port	Trepanning Size: 210.5 * 146.50 mm
Flash: 8GB	Temperature: -20 ~ 70°C (work) -40 ~ 85°C (storage and transportation)
Network: High Performance 100M/10M adaptive industrial network card, supporting AUTO MDI/MDIX	Humidity: 20% ~ 90%, no condensation (work), 15% ~ 95%, no condensation (storage and transportation)
Protection grade: the front panel conforms to IP65 (with flat panel installation), and the rear shell of the fuselage conforms to IP20.	

Application Principle Diagram



Product Size Picture:



Support Protocols List:

Common

- 1 BACnet IP
- 2 BACnet MS/TP
- 3 Modbus RTU
- 4 Modbus ASCII
- 5 Modbus TCP
- 6 Modbus UDP
- 7 Modbus RTU_TCP
- 8 Modbus RTU_UDP
- 9 Modbus ASCII_TCP
- 10 Modbus ASCII_UDP
- 11 Modbus RTU Server ModbusRTU
- 12 OPC XML-DA OPC
- 13 OPC UA Client OPC UA Client
- 14 SNMP
- 15 Simulator

Calorimeter For EU

- 16 MBus_EnergyMeter_EN
- 17 MBus_EnergyMeter_EN_ABB_FCU
- 18 MBus_EnergyMeter_EN_ATLAS

Calorimeter for CN

- 19 MBus_XinTuo_XTR
- 20 MBus_MaiTuo_MTW
- 21 MBus_AKE
- 22 MBus_YongGang
- 23 MBus_Zenner
- 24 MBus_EnergerMeter Mbus
- 25 MBus_EnergyMeter_HaiLin
- 26 Modbus_HaiLin_EnergyMeter Modbus
- 27 MBus_Zenner_WR3

Water Meter

- 28 MBus_WaterMeter Mbus
- 29 MBus_lygIhsb
- 30 ModbusRTU_Zenner Modbus
- 31 MBus_WaterMeter_LXSGY_15E
- 32 JiangYin_LiXin_WaterMeter

Flow Meter

- 33 Modbus Kent
- 34 Spirax SARCO M841
- 35 SC_FlowMeter
- 36 Modbus_CNM
- 37 MODBUS_LCD LCD
- 38 Modbus_LDZ_6_GuangHua
- 39 Modbus_BiaoYi_WL
- 40 ModbusRTU_D08_8C
- 41 LCM_2000DF LCM_2000DF
- 42 LJS_ZLJS LJS-ZLJS
- 43 Tancy_FlowmeterV1_3

Elevator

- 44 Hitachi Elevator BA Interface
- 45 Mitsubishi Elevator SMOS-PS2
- 46 Mitsubishi Elevator KLR-F485
- 47 Otis Elevator BA Interface
- 48 ModbusRTU_Otis_BAS
- 49 Otis_Elevator_BA_Jen2
- 50 ModbusTCP_Thyssenkrupp_Elevator
- 51 ModbusRTU_Thyssenkrupp_Elevator
- 52 Mitsubishi Elevator SMOS-PS2_TCP
- 53 Modbus_Otis_Elevator
- 54 Modbus_Kone elevator
- 55 Modbus_Kone elevator ASCII
- 56 Mitsubishi Elevator MAXIEZ
- 57 Modbus_XIOLIFT_Elevator
- 58 XIOLIFT_Escalator
- 59 Elevator_3_Map

Electricity Meter

- 60 IEC104
- 61 DLT645-1997
- 62 DLT645-2007
- 63 Modbus PM800
- 64 Modbus IEM3000
- 65 CDT
- 66 DLT645-CHINT
- 67 Modbus_woyat

Aircondition

68 Toshiba_Airconditioning
69 EMERSON_ACM03U1
70 Hisense_Airconditioning
71 Joton Tmaster
72 Modbus_DAIKIN_IRACC
73 DAIKIN_DRCH-R5
74 VotonThermostat
75 SysGreen_Airconditioning
76 Hitachi_Chiller
77 SANYO_DG-52GHT
78 Gree_BaseStationAirconditioning
79 RC_Com
80 ZHONGHONG_VRVGateway
81 Modbus_YORK_YCOH120HSEM
82 Modbus_York
83 Panasonic_Inverter
84 SamSung_DVM_Protocol
85 SHWARM_AIR SHWARM_AIR
86 Elsonic_AC331
87 Bandary_NC301
88 York_ISN
89 YAIR_Airconditioning
90 RKC_CH402
91 BIGBANIAN_AIRC800
92 MITSUBISHI_HEAVY_Haier_QMS
93 Mitsubishi_VRV_ABWG_CCM10
94 SINOCLEAN485

PLC Series

95 Mitsubishi FX1S
96 Mitsubishi FX2N
97 Mitsubishi FX3U
98 Mitsubishi FX_485ADP_485BD
99 Mitsubishi Melsec_Q_Serial
100 Mitsubishi Melsec_Q_TCP
101 MEGMEET_MC200
102 Haiwell E/S PLC
103 Haiwell H/N PLC
104 Panasonic FP
105 XINJE PLC
106 DELTA_DVP
107 FATEK_FB

108 OMRON_FINS_UDP
109 OMRON_FINS_Serial
110 OMRON_CP1H
111 Saia_SBus_UDP
112 Toshiba_PROVISOR_TC200
113 LS_GM_GLOFA_Enet LG GLOFA-GM PLC
114 Siemens_IPC_PLC
115 AB_EthernetIP AB CompactLogix
116 AB_DF1_FullDuplex ABLogix_DF1

Siemen PLC

117 Siemens S7-200 PPI
118 Siemens S7-200 Network
119 Siemens S7-300 Network
120 Siemens S7-1200 Network
121 XT55 GPS SERVER
122 Siemens_MicroMaster430

Lighting Control

123 KNXnetIP_MultiCast KNX
124 DyNet
125 Modbus LDS LDS
126 MicroPara_DR0816
127 MicroPara_DR1220
128 MicroPara_DH0416
129 LitePuter_DP_105E
130 LitePuter_PLNET
131 MicroPara
132 ULaiDe
133 LDS
134 E_Linkers_ECWG485
135 Lutron_Telnet
136 DALITEK_DigitalHotelInterface
137 Gfilcs_GF_LCS6008_NCC
138 CRESTRON_DIN_AP3_TCP
139 EastSun_UDP

UPS

140 SANTAK UPS
141 DELTA UPS ES3000
142 LEGRAND UPS

143 EMERSON_HIPULSE
144 EMERSON_Liebert_UPS
145 ModbusRTU_GE_UPS
146 EKSI_UPS
147 EMERSON_NXL
148 EMERSON_ITA40k_UPS
149 EMERSON_UH31_UH31
150 EMERSON_UL33_UL33
151 Voltronic_Power_UPS Voltronic Power UP
152 Envicool_CyberMate
153 VERTIV_PEX_CW_YDN32
154 Hisense_YDT
155 MenTech_MEC048_H53A0

Fire Alarm

156 JB-3208 CRT
157 Siemens Cerberus FS18
158 BOSCH_DS7400XI_TCP
159 BOSCH_DS7400XI
160 BOSCH_MTSW_UDPServer
161 VESDA_Open_HLI_Protocol VESDA
162 YANRONG_YR_LC_TXAH
163 NOTIFIRE_NFS2_3030_CRT
164 TYCO_Simplex_4100ZHU
165 LEADER_LD128E_CRT
166 EST3_CRT EST3_CRT
167 JADE_BIRD_JBF_193K_CRT
168 saj110_AlarmSystem
169 Forsafe_CRT

Lumi Gateway

170 Lumi_Gateway
171 Lumi_Aqara

Injection Machine

172 SUMITOMO_SE_D
173 LK_POTENZA_200
174 LK_POTENZA_PT320

Environment

175 SC_HuangMei
176 FRT_AQM1000

177 JiangSu_LYHB_COD
178 TSI_PM25 TSI PM2.5
179 WXT520 WXT520
180 LD2_PHRH_RS485 LD2
181 TSI_DustTrakII_TCP TSI DustTrakII
182 BHHB_212Serial
183 Modbus_TGCS TGCS-60及TGCS-100
184 SJINT
185 Condair_PH
186 ChengDu_Weather
187 NowAPI_Weather NowAPI

Weight

188 Buhler_MEAF
189 METTLER_TOLEDO_SICS
190 YAOHUA_XK3190_A9
191 XPBalance_ES_20KTS
192 GriffithElder_ContainerTilt GriffithElder
193 SH_ShenHao_465D
194 WXRL_SLC

MQTT

195 MQTT_Lora_TL_ACQ1
196 MQTT_Eastsoft
197 MQTT_NOVUS_LogBoxWiFi NOVUS_LogBoxWiFi

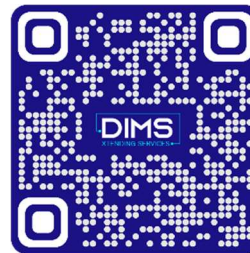
Date Acquisition

198 MySQL
199 MicroSoft_SQL_Server

Other protocols

200 FFU
201 Panasonic MINAS A5
202 SINOLY JINE_JA05
203 SAUTER_CASE_VAV
204 EMEC_LDPH
205 YuDian_AI_Single_loop
206 Modbus_GreenDaoFenMuJi
207 SOLIN
208 ACTI_SignalSelector
209 N2_VMA N2_VMA
210 Modbus_TG01W
211 Ebara_Densan_S-BCS

- | | |
|--|--------------------------|
| 212 Modbus_HOLTOP_HDK_09S_BA | 240 Kaseman GRC TNC-6 |
| 213 YeeFung_Parking_System | 241 Hypersee_Radar |
| 214 Projector | 242 Hypersee_Alarm_Radar |
| 215 HeFei_Ahhfat | 243 JinXiang_PowerModule |
| 216 BoosterBoiler_NEURON_NXQ | 244 AOK_Motor_Control |
| 217 Epson_PJLink | 245 Hotel_CheckIn_System |
| 218 AAF_EBMBUS_EC | 246 ESPEC_A_Series |
| 219 Arspas_FFU | 247 LeiyoukejiAPI_HTTP |
| 220 SW_5 | 248 SHCanYu_485 |
| 221 BMS_RICHPOWER | |
| 222 BMS_PACE | |
| 223 XiAn_XinRiAuto_MT_CN | |
| 224 XiAn_XinRiAuto_Water_HTTP | |
| 225 KONZESYS_RMCS_HTTP | |
| 226 Newell_Technologies_iControl_System | |
| Newell | |
| 227 Newell_Technologies_HarborGreen Newell | |
| 228 Modbus_Maxonic | |
| 229 TOA_VX2000_V3 TOA_VX2000_V3 | |
| 230 LTM9662_485NET | |
| 231 Lance_LTM8000 | |
| 232 JJ_GyuKaku | |
| 233 CHANG_AI_CI_PC56 昶艾 CI-PC56 | |
| 234 XZ_DS01_TH2C | |
| 235 FCU_485 FCU485 | |
| 236 MICROSENSOR | |
| 237 IBT_ModbusRTUClient IBT | |
| 238 Systec_SerialProtocol | |
| 239 Cibsolar_CA | |



DIMS Xtended Services Private Limited

<https://dimsolutions.co.in>
info@dimsolutions.co.in